

Essential Questions for Pet-Safe Lawn Care

1. What Types of Fertilizers Are Being Used?

Start by asking exactly what your landscapers are putting onto your lawn. Not all fertilizers are created equal. Many commercial options contain nitrogen, phosphorus, and potassium in forms that may be harmful to pets if ingested or tracked into your home.



2. How Long Before Pets Can Go Back on the Lawn?

One of the most critical questions to ask your lawn care professional is how long pets should stay off the lawn after treatment. Even pet-safe products often require a drying or absorption period. A responsible provider will give you a specific timeframe based on weather conditions and product type.



3. Are Weed Control Products Safe for Pets?

Weed control can be one of the biggest threats to pet safety. Products containing glyphosate or 2,4-D have been linked to serious health concerns in dogs, including skin irritation, gastrointestinal upset, and even long-term risks with repeated exposure.



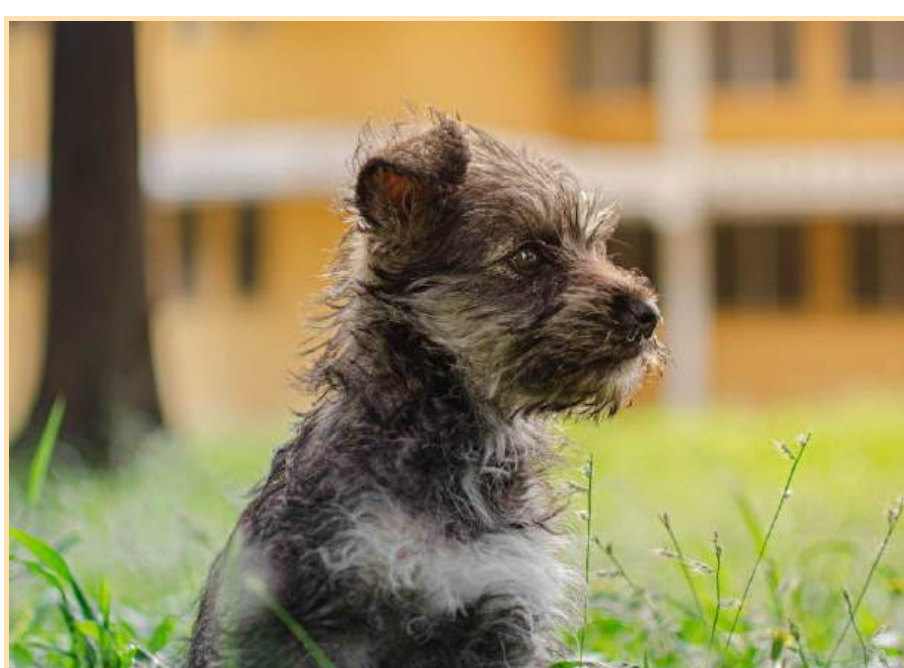
4. What Is the Application Method?

The method of applying lawn treatments plays a massive role in safety. Granular applications are safer for pets than sprays because they are less likely to coat fur and paws, though they can still pose a risk if ingested. Spray applications, especially on windy days, can drift and settle on surfaces where pets eat or rest. Ask how the product is applied, what measures are taken to reduce exposure, and whether reentry instructions differ for different methods.



5. Will You Monitor Soil Health Naturally?

A lawn that needs constant treatment may not be a healthy one to begin with. A soil-first approach is often the best path to a lush lawn without risky chemicals. Ask whether your lawn care company conducts soil tests and recommends natural amendments like compost, worm castings, or aeration.



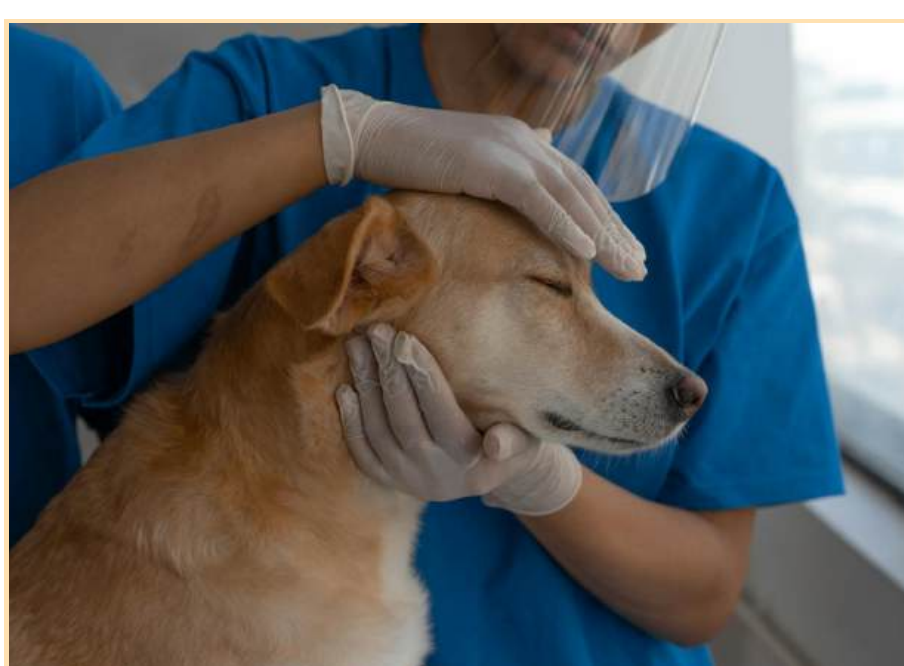
6. Can I Be Notified Before Each Treatment?

You should never discover your lawn was treated after your pet has walked through it. Request a lawn care schedule and ask for notifications before each service. This gives you time to prepare by walking your dog elsewhere that day, cleaning up pet toys from the yard, or simply keeping your pets indoors.



7. What Certifications or Practices Ensure Pet Safety?

Look for providers who go above and beyond basic EPA regulations. Ask about certifications from the National Organic Program (NOP) or EcoCert. Some companies even specialize in pet-safe lawn care, which will prominently feature in their marketing or service materials.



Presented by:

RiversideCustomOutdoors.com

Riverside
**CUSTOM
OUTDOORS**

Image Source:
pexels.com