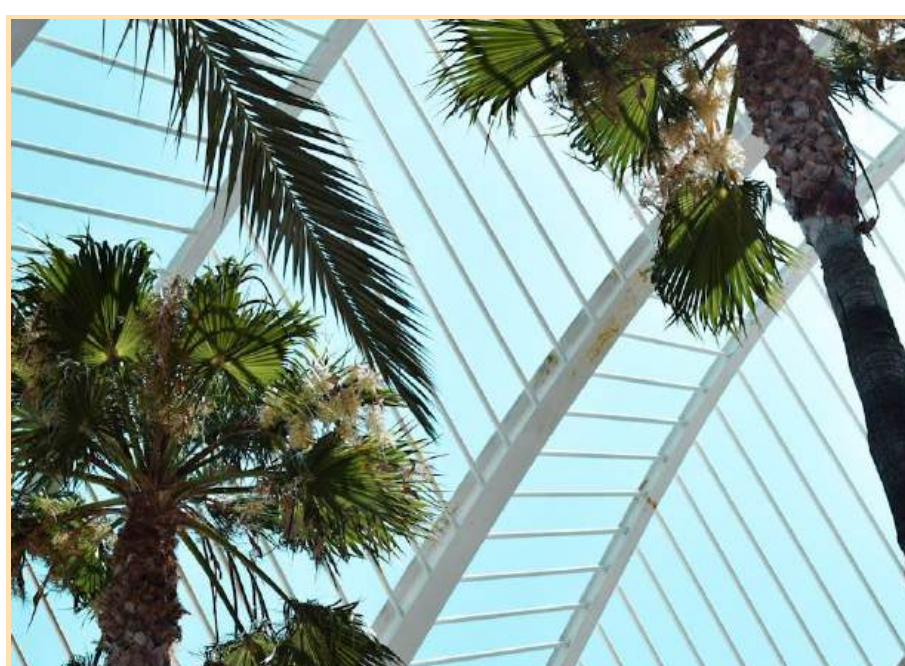


Ways to Blend Trees Into Contemporary Landscapes

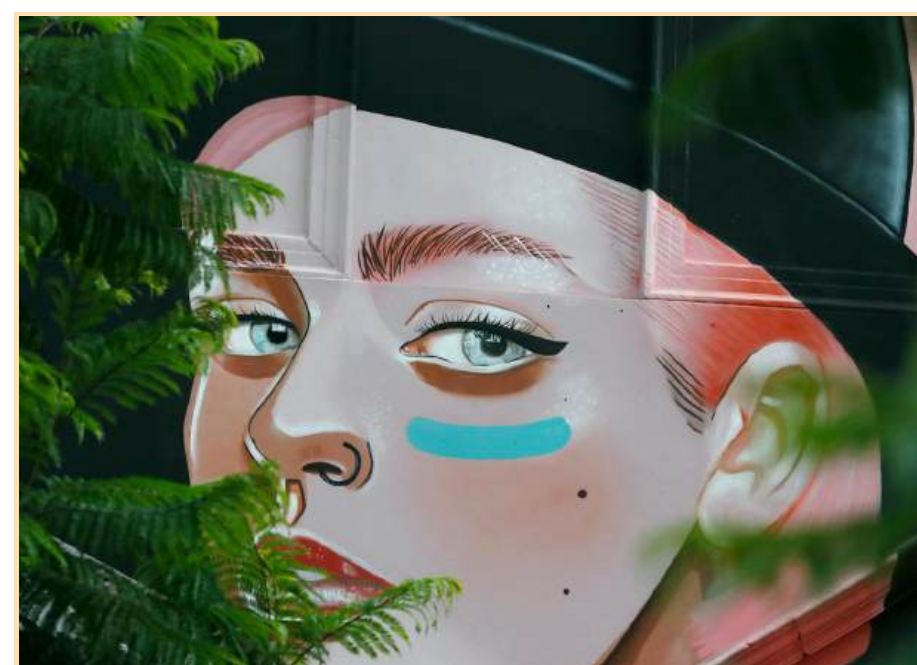
1. Trees Belong in Contemporary Outdoor Spaces

Many homeowners worry that trees will disrupt the order or symmetry of their layout. But when used strategically, trees reinforce the principles of modern design. They offer vertical interest and frame views and provide a contrast, highlighting the clean lines and bold geometry you're working hard to create.



2. Choose the Right Trees for a Contemporary Aesthetic

Not all trees will complement a modern space, so be selective. Look for species that offer sculptural form, controlled growth, and visual interest without overwhelming your layout. A tree with clean lines, striking bark, or an elegant canopy can elevate your landscape rather than compete with it.



3. Placement: Make Trees Work With Your Hardscape

You might love the idea of adding trees, but where you place them makes all the difference. A single tree can act as a focal point in a courtyard, a pair of slender trees can frame an entryway or mirror architectural lines, and a row of columnar trees along a fence line can serve as a natural privacy screen while adding rhythm to your layout.



4. Merge Minimalism with Natural Movement

Minimalist design thrives on contrast, and there's nothing more compelling than pairing sleek pavers or crisp decking with the shifting silhouette of a tree. A twisted trunk can contrast with a clean wall, or soft foliage can spill over a rigid structure. This contrast brings balance and softness to otherwise rigid spaces.



5. Integrate Trees With Sustainable Design Practices

Modern landscaping often incorporates sustainable practices, and trees play a crucial role in that effort. Strategic planting reduces energy use, supports local biodiversity, and creates a more comfortable microclimate in your yard.



6. Design Around Growth and Time

Think about how the tree's canopy will expand and whether it will interfere with walkways, walls, or lighting over time. Leave enough space around each planting to avoid crowding, and consider the mature size of the tree, not just what it looks like in a nursery.



7. Blend in Trees With Other Landscape Features

Trees don't exist in a vacuum. They should be part of a broader design strategy that includes seating, lighting, groundcover, and water features. When you design holistically, everything feels connected, from the canopy above to the materials underfoot.



Presented by:

RiversideCustomOutdoors.com

Riverside
CUSTOM
OUTDOORS

Image Source:
pexels.com